



VB23 3" Floating Floor Socket/Floor Plate

For use with Bison Centerline, CarbonMax and Lady CarbonMax aluminum or steel volleyball standards... Premium quality, cast brass floor plate is hinged for easy use • 10" deep socket • Requires subfloor excavation and hardwood floor routing for installation in existing floors • Use with any 3" standards • Allows floating floor to expand and contract with changes in humidity • Requires two per system • **CAUTION!** Floor sockets are difficult and often impossible to install on floors with basements or other hollow cavities below, consult an experienced installer for assistance. Approx. shipping weight: 7#/each; Sm. Pkg.

VB23



VB23-CV Hinged Brass Floor Plate Only (not shown)

Purchase floor plate separately for use over existing floor sockets... Premium quality, cast brass floor plate • Can be used with 3" or 3 1/2" sockets • Does not include socket. Approx. shipping weight: 5#/each; Sm. Pkg.

VB26

VB26 3 1/2" Floating Floor Socket/Floor Plate

Use with Bison Match Point™ aluminum or steel volleyball standards... Cast brass hinged floor plate is machined for a high quality fit and finish • 10" deep, 3 1/2" diameter socket for use with Bison VB50, VB60 or VB500 standards • Allows floating wooden floors to expand and contract with changes in humidity • Requires subfloor excavation and routing of wood to retrofit into existing facilities • Requires two per system • **Caution!** Floor sockets are difficult and often impossible to install on floors with basements or hollow cavities below, consult an experienced installer for assistance. Approx. shipping weight: 8#/each; Sm. Pkg.



VB235



VB21

VB21 3 1/2" Standard Floor Socket

Powder coated steel construction... Use on all non-floating floor systems, including concrete, tile or synthetic • Aluminum cap • Requires excavation of existing floors • Socket is approx. 9" deep • For use with VB50, VB60 or VB500 posts and other Bison 3 1/2" game standards • Requires two per system. Approx. shipping weight: 9#/each; Sm. Pkg.

VB235 3" Standard Floor Socket

Powder coated steel construction... Use when installing any 3" standards on non-floating floors, including concrete, tile and synthetic • Requires two per system • Powder coated steel, 9" deep socket has 3/8" thick plated steel cap • Requires excavation of floor. Approx. shipping weight 9#/each; Sm. Pkg.

VB24 2 3/8" Standard Floor Socket

Floor socket for Bison VB0050 or VBM1500 volleyball/badminton game standards... Use on synthetic, tile or concrete floors • Order VB23-CV separately for use on floating hardwood floors • Powder coated steel construction • Includes flush floor caps • Requires two per system • Requires floor excavation. Approx. shipping weight: 5#/each; Sm. Pkg.

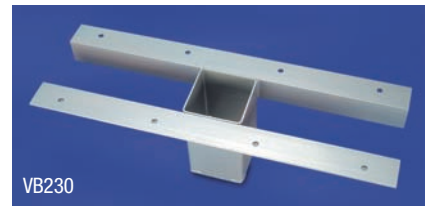


VB24

VB230 Second Story Volleyball Socket Form

Just what you need to install volleyball sockets in floors with lower level or crawl space directly below volleyball court... Pre-fabricated form

can be used as is or field modified • Use in conjunction with VB23, VB235, VB21, VB24 or VB26 floor sockets • Heavy welded steel with powder coated finish • Requires experienced installer for proper use. Approx. shipping weight: 45#; Truck.



VB230

Bison will fax installation instructions for any floor anchors or sockets upon request.



VB25 Standard Drill-In Floor Anchor

Allows anchoring of portable volleyball or basketball systems to existing concrete, synthetic or tile floors without major concrete excavation... Provides 1/2" threaded hole with spring loaded plug • Requires core drilling and grouting. Approx. shipping weight: 2#/each; Sm. Pkg.

VB25



VB25FL Drill-In Anchor for Common Floating Floors

Same as VB25 except with flange to add additional anchor support when installed on floating maple floor systems... Includes all necessary hardware • Requires concrete core drilling, routing of wood floor and grouting of anchor into concrete • Provides 1/2" threaded hole with spring loaded plug. Approx. shipping weight: 3#/each; Sm. Pkg.

VB25FL



VB25TF Thin Slab Drill-In Floor Anchor

Wide range of thin slab applications... Use on athletic floors that have playing surface installed directly over a concrete surface such as tile or synthetic and where the concrete is too thin to allow the use of VB25 or VB25FL • Same 1/2" threaded insert hole with spring loaded plug • No hardware is provided as this anchor is used in a wide range of applications • Consult a Bison Product Specialist. Approx. shipping weight: 2# each; Sm. Pkg.

VB25TF



VB335

Volleyball Sleeve Adapters

Install 3" diameter or 3 1/2" diameter volleyball systems in any manufacturer's existing 4" or 3 1/2" floor sockets... Order one per each existing socket. Approx. shipping weight: 7#/each; Sm. Pkg.

VB354 To Install 3 1/2" Posts in 4" Floor Sockets

VB340 To Install 3" Posts in 4" Floor Sockets

VB335 To Install 3" Posts in 3 1/2" Floor Sockets

